



3 in 1 LED



Curved channel



Epoxy resin finish



Indoor or outdoor



Dimmable

3 Color Temperature Selectable



2700K Warm White



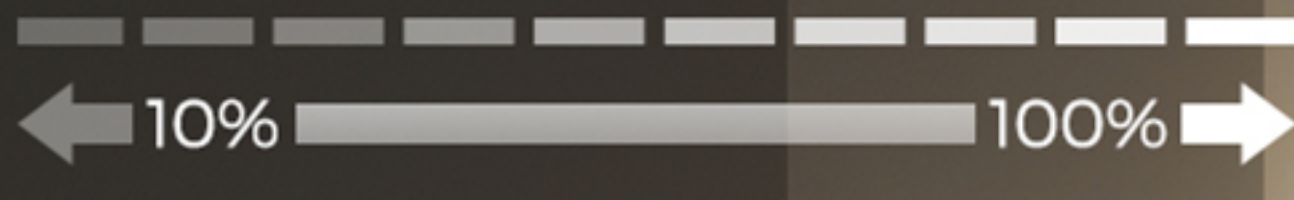
4000K Cool White



5000K Day Light



Dimmable

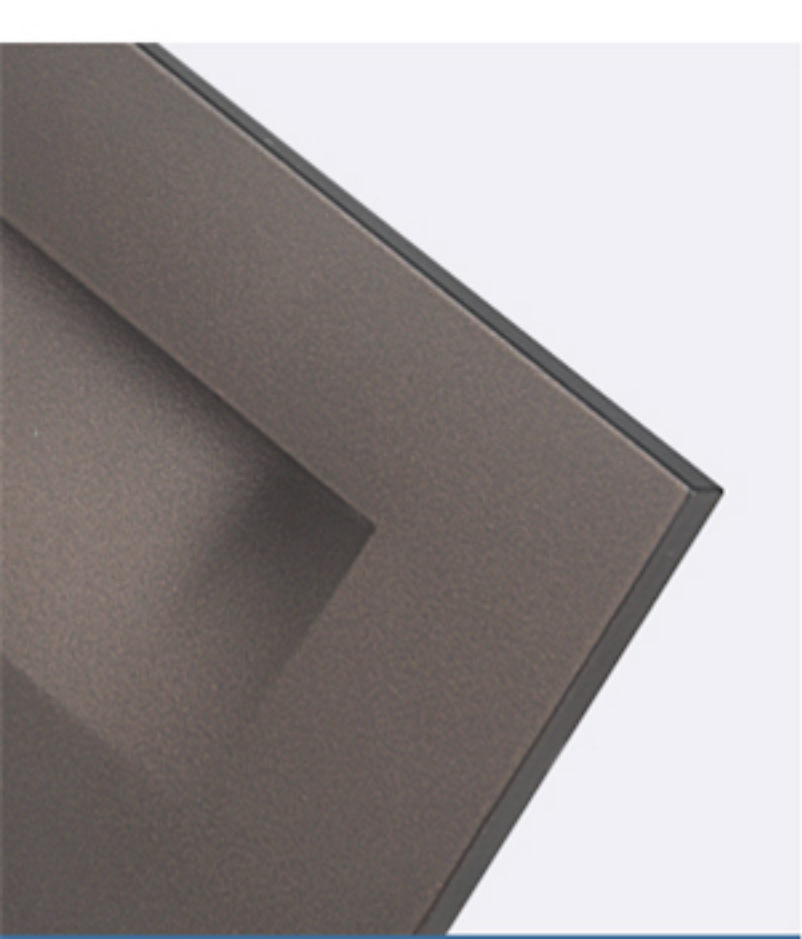


10%

40%

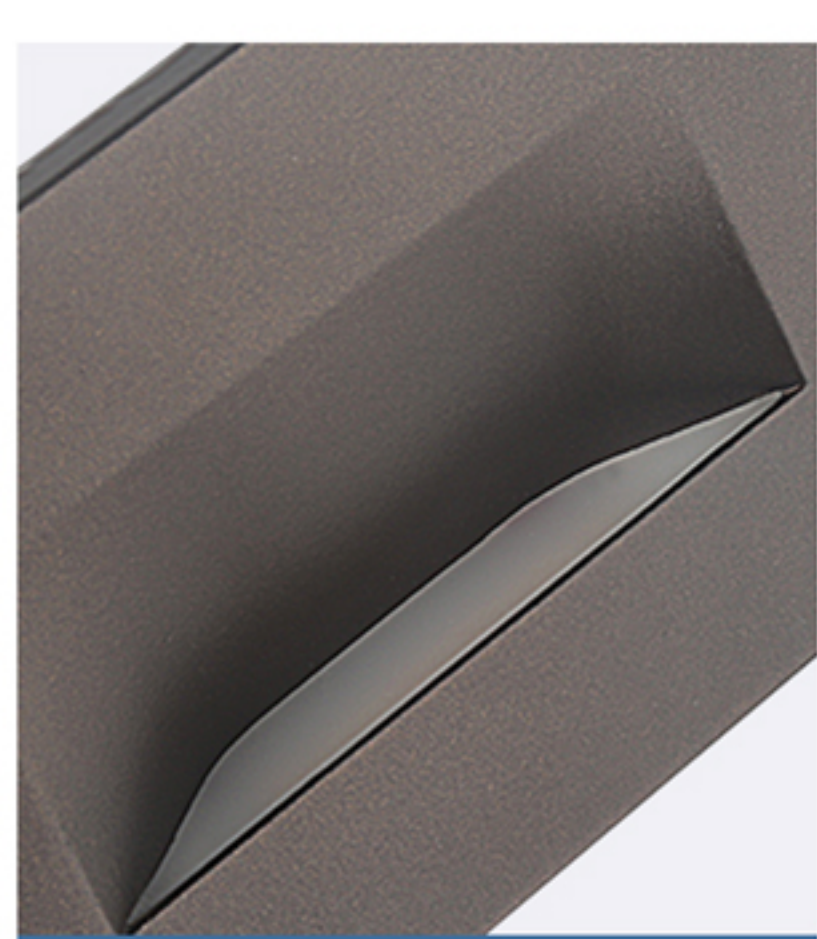
70%

100%



All aluminum housing and epoxy coating

Full die-cast aluminum housing is durable, fast heat dissipation, and can keep good working condition under harsh environment. Brown epoxy powder coating, frosted texture, will not reflect light to cause dazzling.



Integrated chip and 3-in-1 CCT

This embedded chip has a longer service life, saving energy while ensuring sufficient brightness. Manual 3-in-1 color temperature change, you can choose and light color according to different seasons.



Easy to install and safe to use

Designed for U.S. standard junction box, each stair light comes with 3 connectors and screws, 18AWG high temperature resistant cable, easy to install indoors or outdoor.



Side wall mount

Suitable for indoor or outdoor hardscape, flowerbed, step or corridor wall on both side.



Front step mount

Deck or stone steps, whether indoors or outdoors, with light facing downwards, no need to worry about blinding.



CRI 90+

With a higher color reproduction index than most competitors, the realistic will look more realistic.



STEP1 Iron sheet installed in the junction box



STEP2 Connect the wire with the connector



STEP3 Snap the product upwards



STEP4 Complete the installation



Wall Mount



Step Mount